

THE

Augusta



A

The classic charm and sophistication of the Augusta ranch is eminent from every angle. A traditional front entrance and peaked rooflines display a sense of refinement while the brick facade and oversized windows offer a timeless appeal.

2 BEDROOM

2 BATH

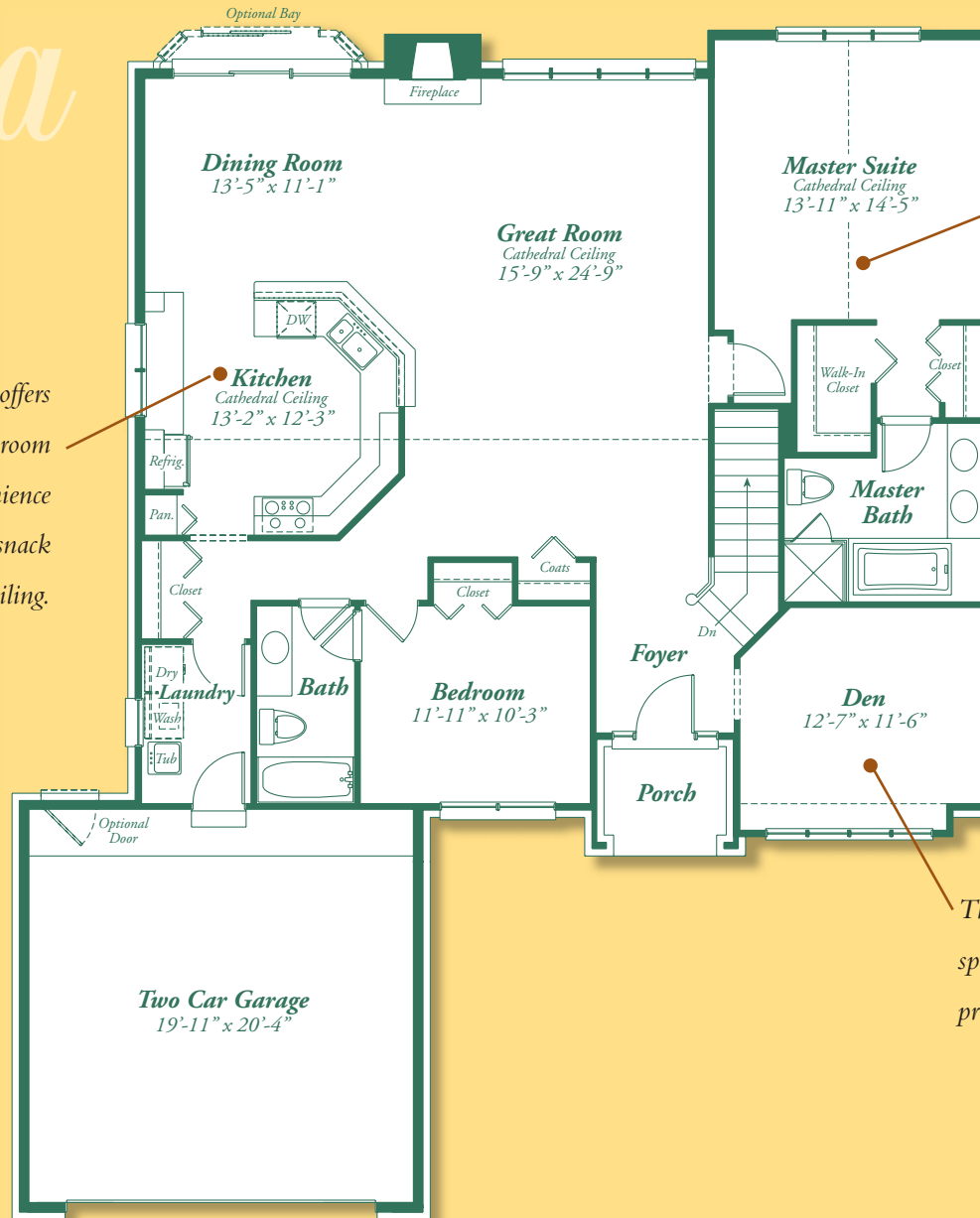
Approx. Sq. Ft. 1,770



THE

Augusta

The spacious and efficient kitchen offers entrance to the adjacent dining room and provides the ultimate in convenience and style with dramatic angles, snack bar and a cathedral ceiling.



An extraordinary master suite serves as an inviting sanctuary with walk-in closets, cathedral ceiling and adjoining master bath with dual sinks, a relaxing soaking tub and separate shower.

The cozy den offers the perfect space for peaceful retreat and private reflection.

gtrcompanies.com

In our continuing effort to meet homebuyers' expectations, we reserve the right to modify features, price, specifications and/or to change or discontinue models without notice or obligation. Floor plan dimensions are approximate. Renderings are artist's conception. © 2007

