



THE

Clayburn

The stately appearance of The Clayburn is enhanced by impressive bay or circle-top windows, which allow for maximum sunlight to flow throughout. The keystone accented center entrance is highlighted by gabled and rounded rooflines and a choice of warm brick exterior.

STANDARD



B



A

4 BEDROOM

2 1/2 BATH

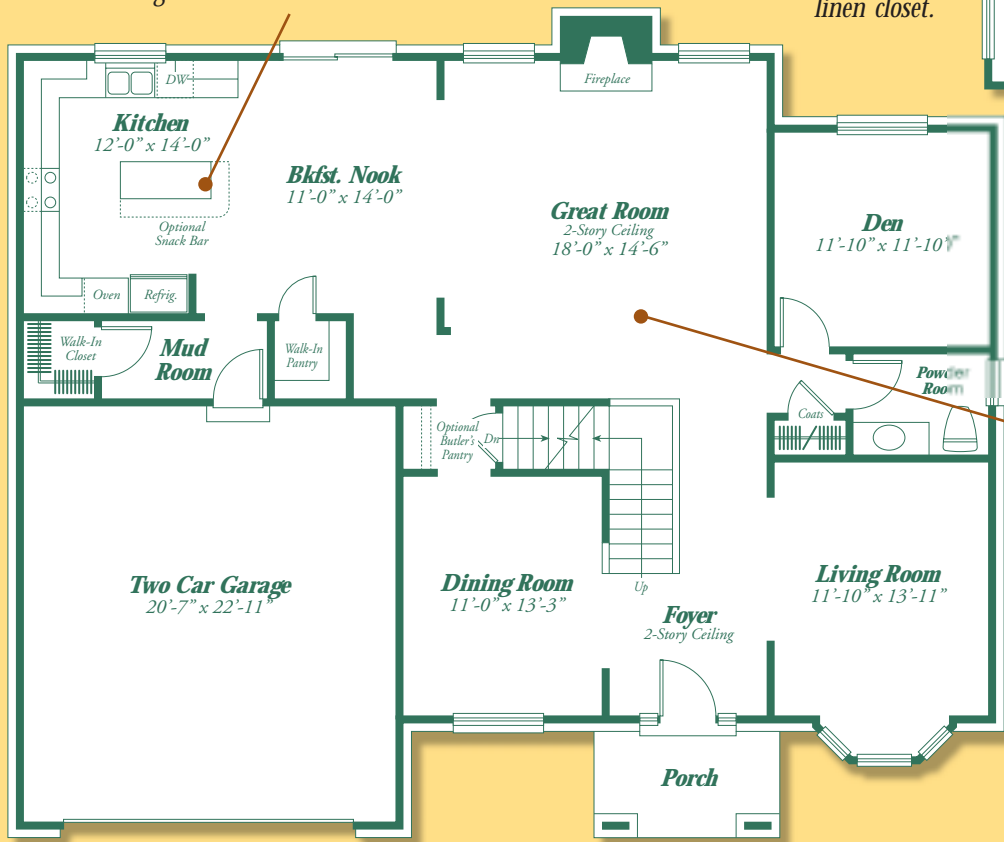
Approx. Sq. Ft. 3,210



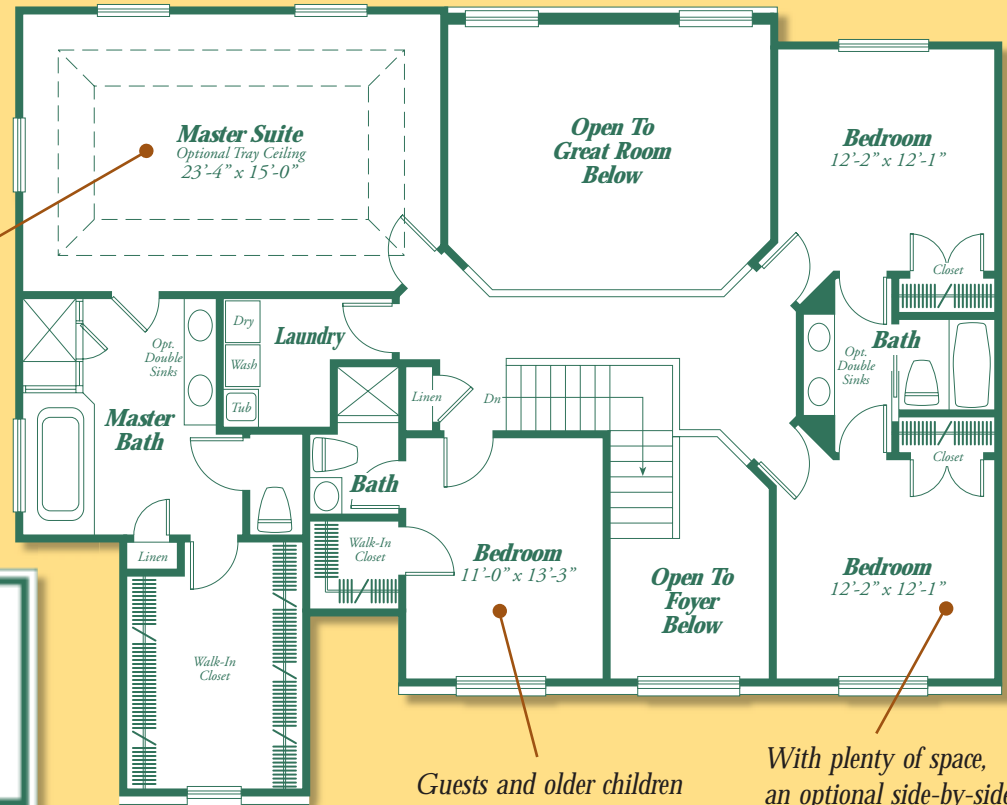
THE

Clayburn

Ample workspace marks this expansive kitchen with center island and adjacent breakfast nook, mud room and walk-in pantry. A short hallway leads to the formal dining room.



The master suite with optional tray ceiling acts as a tranquil sanctuary with a massive walk-in closet, master bath with both tub and shower, and a convenient linen closet.



Guests and older children alike can enjoy the privacy of this bedroom with walk-in closet and private bath.

With plenty of space, an optional side-by-side vanity in the shared bath and large closets, these bedrooms are perfect for siblings.

A 2-story ceiling and grand central fireplace elevate this outstanding great room. The neighboring den, living room and foyer ensure that traffic flows naturally from room to room while providing a variety of spaces for the whole family to relax.

gtrcompanies.com

In our continuing effort to meet homebuyers' expectations, we reserve the right to modify features, price, specifications and/or to change or discontinue models without notice or obligation. Floor plan dimensions are approximate. Renderings are artist's conception. © 2006

