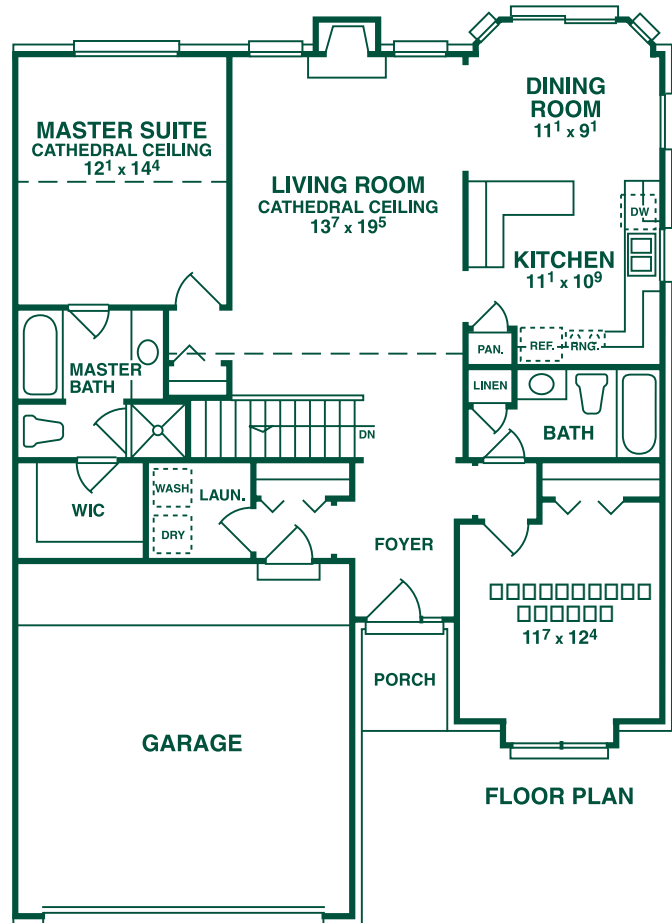
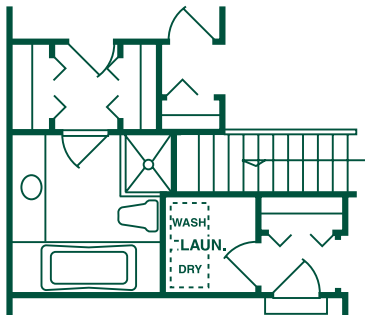


# THE BRADBURY

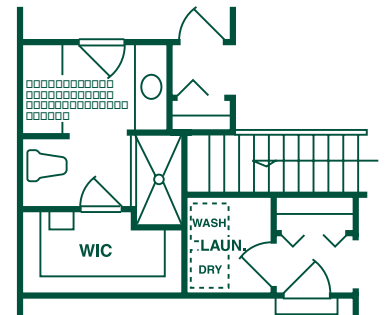
A cathedral ceiling in the living room and bank of windows encircling the dining room imparts an open, airy feeling to this charming 2-bedroom, 2-bath ranch condominium. Preparing meals and entertaining guests is a breeze, with the handy kitchen open to both the dining room and living room. A luxurious master suite with a walk-in closet, cathedral ceiling and roomy bath features both a tub and a shower. The second bedroom with an adjoining full bath could just as easily be used as a den or home office. Direct access to a coat closet and laundry area from the 2-car attached garage makes storage of outer garments effortless.



FLOOR PLAN



OPTIONAL MASTER BATH



OPTIONAL MASTER BATH WITH WHEELCHAIR ACCESS



Conveniently Located on Heydenreich, Just North of Hall Road

586.465.3960

[www.gtrwindemere.com](http://www.gtrwindemere.com)



All information contained herein was accurate at the time of publication. In order to maintain the high degree of quality and incorporate management with greater facility and economy, we reserve the right to make changes in price, specifications, materials, site plan, amenity location or to change or discontinue models without notice or obligation. Renderings and illustrations are the artist's concepts.