



THE Woodberry

The stately appearance of The Woodberry is uniquely accented by dramatic details, including circle-top, square and bay windows. The inviting keystone porch entrance and gabled roofline offer a timeless look of elegance while a choice of siding and brick facades allow for maximum distinction.

STANDARD



C



B

4 BEDROOM
2 1/2 BATH
Approx. Sq. Ft. 2,700



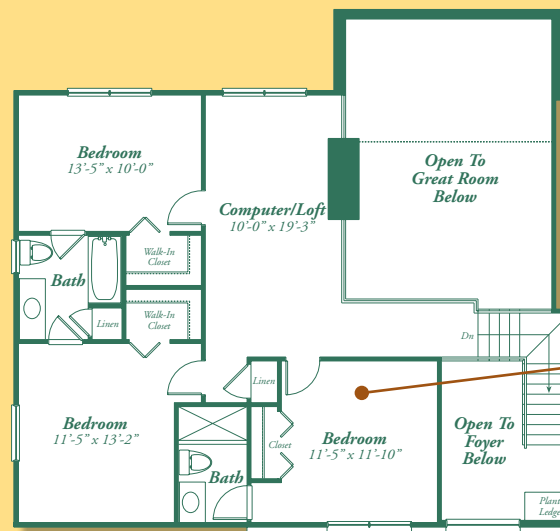
THE

Woodberry

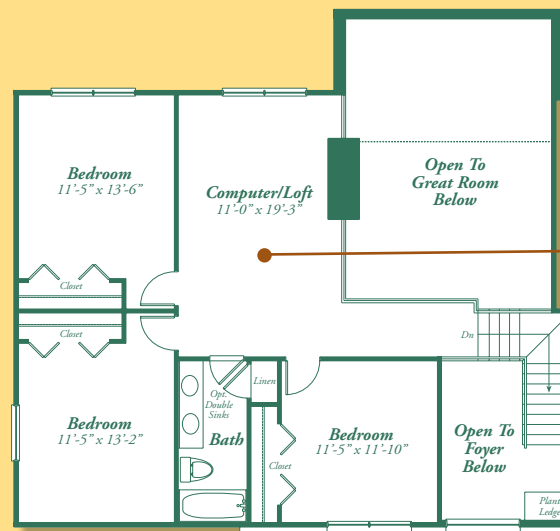
The spacious kitchen acts as the focal point of the home with convenient breakfast nook and hearth room and optional bay window.



An elegant master suite offers the height of luxury with dramatic cathedral ceiling, generous walk-in closets and opulent master bath with dual sinks, soaking tub and private shower.



A spacious second floor bedroom offers both privacy and luxury to guests or family members alike with its own private bath.



A convenient second floor loft provides the ideal space for a computer/office area.

gtrcompanies.com

In our continuing effort to meet homebuyers' expectations, we reserve the right to modify features, price, specifications and/or to change or discontinue models without notice or obligation. Floor plan dimensions are approximate. Renderings are artist's conception. © 2007

